

SHAVINGS

The Newsletter of the Wooden Boat Association Inc.

Registered Incorporation Number A0022538U

Volume 33 Number 1. February 2023

<https://www.woodenboat.asn.au>

~ President's Report ~

Ahoy Boat Enthusiasts!

I would like to give you all a big welcome to the new year! The committee has so many big things planned. 2023 is for Boaties like you and me!

On our most recent sail day, on the 15th of January, Chris brought in quite a few photographs, a bag of history captured by Alan Chinn. The man who slapped down the first \$10 for our club. A table was cleared in the upper hall of the APYC, where a handful of members surrounded the collage of images. So many stories captured in those little 4x6 inch pieces of card.

There was one image (that I have attached), taken in the 90's. It tells the story of how the fish and chips at Rye tradition began. During a WBA group outing on the bay, the group had a stop off in Rye. In the image below you can see how much slack that rope has. Definitely a case of keel kissing the sand.

A quick stop off, turned into waiting for the tide and rope tension to rise again. This did not happen until 10pm that evening. What better way to kill time than to eat crisp chips and crumbed fish... or battered. Let me know your favourite.

As simple as that, a WBA tradition was born... about the same year I was born haha. This tale also reminded me of when Nick, Chris and I went around to help Alan's wife clear out their boatshed. Also known as a garage. Apparently people who are not like us boat freaks store things other than boats in garages. How weird is that?

Anyway, while we cleaned out the boat space. Nick told me about another founding member, Brian. He was showing Nick some WBA images. "It seems odd how you're never in the photos" Nick asked. "Who do you think took all the photos?" Brian retorts "I was busy capturing the history of it all."

I'm not sure if I'm making any sense. All I am trying to say is history and traditions are being made at every WBA gathering.

This is my call to action to you all. Get on our facebook and start posting. Add images and tell the story behind it. Let's share our collective history.

Ethan Urch
WBA President



~ End of year sailing day ~

Anyone with any sense didn't bring a boat to the end of year sailing day. The forecast wasn't good and the weather matched the forecast. Only Begonia sailed, Alex rowed from the ramp to the club house and then back to the ramp at the end of the day. Jim and Mick didn't even take their boats off their roof racks.

The sail on one of the sailing school's boats was shredded in one of the gusts. Mick's bought a new old boat that lives at Essendon Rowing Club. It is a 6.4m long wooden racing skiff fitted with a sliding seat which many of us are hoping to try out some day. Mick said that it may have been built for rowing on Sydney Harbour as it has more sheer in the gunwales and is fuller in the body than a rowing shell to better cope with waves.

With the rising COVID cases this month, lunch was a much simpler meal than previous years to reduce contact between people. Penny prepared salads and several desert options, Ethan and Mick cooked sausages and onions. Seating was at dispersed tables with fewer people at each table than we usually have.

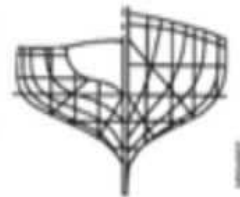
Anyway, we enjoyed lunch in the clubrooms, told tall tales and went home wishing each other well for the new year and hoping for better sailing weather in 2023.

Jim Stockton



FRECHEVILLE HEANEY BOATS

Restoration and Building of fine craft.



59 Slip Road, Paynesville - 0437 850 053 - fhboats.com.au  **YANMAR**

Tudor Insurance Australia (Insurance Brokers) Pty Ltd

Specialists in hassle-free insurance for wooden boats

1st Floor, 9 Clyde Rd Berwick, Vic 3806

Postal Address: P.O. Box 256, Berwick Vic 3806

Contact: David Cooper

Phone: (03) 9707 3033

Fax: (03) 9707 4568

E-mail: davidc@tudorinsurance.com.au

Webpage: tudorinsurance.com.au



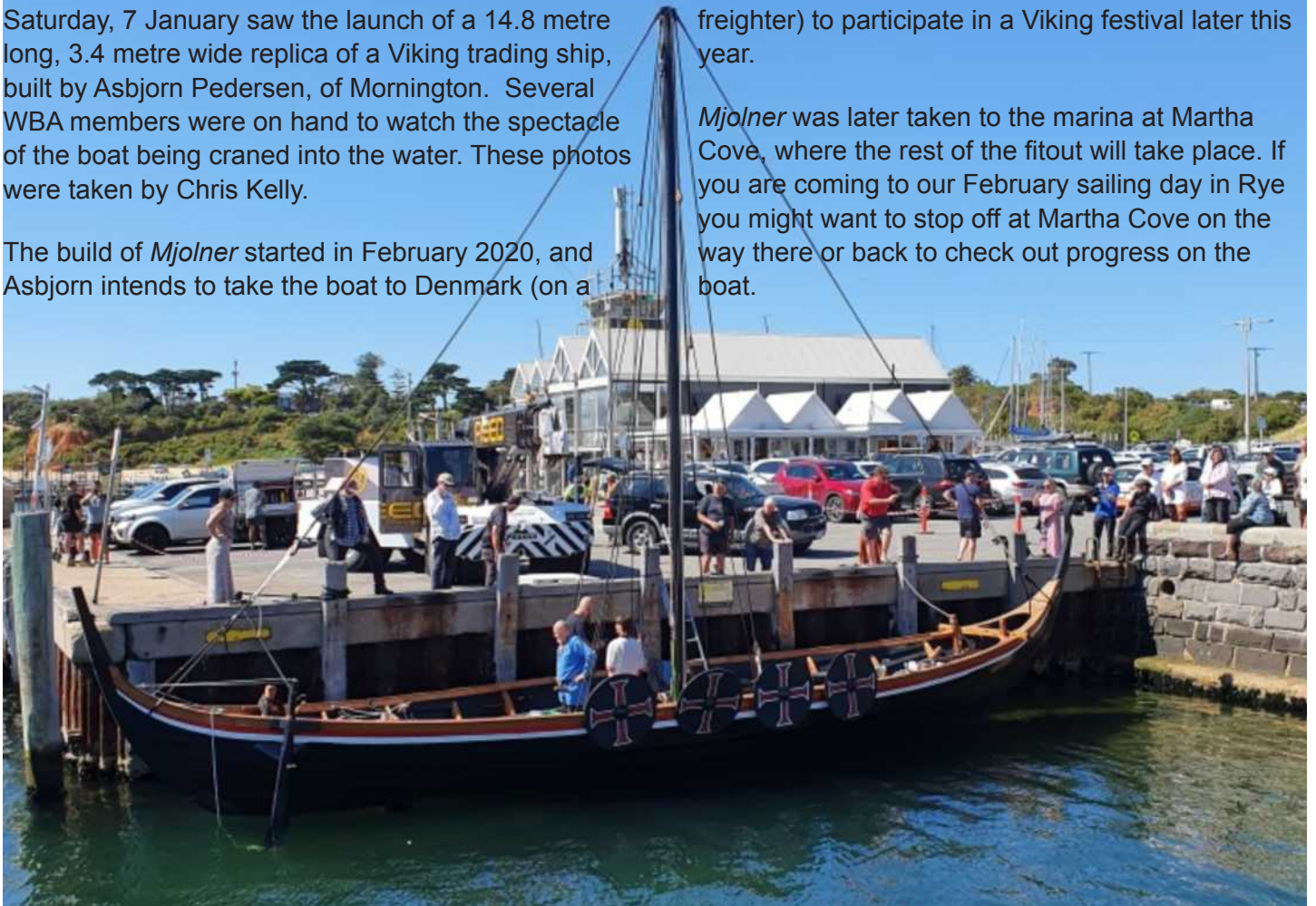
~ Viking Longboat launched at Morningside

Saturday, 7 January saw the launch of a 14.8 metre long, 3.4 metre wide replica of a Viking trading ship, built by Asbjorn Pedersen, of Morningside. Several WBA members were on hand to watch the spectacle of the boat being craned into the water. These photos were taken by Chris Kelly.

The build of *Mjolner* started in February 2020, and Asbjorn intends to take the boat to Denmark (on a

freighter) to participate in a Viking festival later this year.

Mjolner was later taken to the marina at Martha Cove, where the rest of the fitout will take place. If you are coming to our February sailing day in Rye you might want to stop off at Martha Cove on the way there or back to check out progress on the boat.



~ Coming events ~

Club Night - Twilight boating at Albert Park Lake – Wednesday 15 Feb, 6pm

Take advantage of the long twilight evening to cruise around the Lake, sailing, rowing or paddling. Bring your boat and a picnic dinner or light up the barbecue on the deck and watch night settle in. Ah, the serenity...

The clubhouse will be open from around 6pm but feel free to come down and launch earlier. Note that if you do want to launch at the big ramp next to the restaurant, you must let Peter Batchelor know ASAP (0425 733 532 or editor@woodenboat.asn.au) as this has to be arranged in advance with Parks Victoria.

Sailing Day – Rye Beach - Sunday 26 Feb, 10am

Our traditional day out at Rye is always well-attended and always great fun for all the family. The day is free-flowing and will start from around 10am, launch at the triple-lane, all-tide boat ramp, enter from Nepean Hwy past the lights at Dundas Rd (Melway 168 F4), ~500m the non-Melbourne side of Rye township, . There is plenty of free car and trailer parking adjacent to the ramp, and toilets nearby.

Sail/row/paddle/putter as the fancy (and wind and tide) takes you, try out someone else's boat, travel out on the bay to the seals at Chinaman's Hat or along the coast towards Sorrento or Mt Martha, or just sit and chat on the beach. Bring lunch (or purchase at nearby shops), sun shelter, chairs, rugs and whatever else you need for a relaxed day at the beach in company with friends. Don't forget your swimmers!

Fish 'n' chips on the beach at the end of the day is a long-standing part of the event.

Club Night - Cruise the Maribyrnong River aboard *Blackbird* - Wednesday 15 March, 6pm

Another WBA favourite - an early evening cruise on the Maribyrnong River on traditional wooden ferry *Blackbird*, with a pub dinner (optional) nearby afterwards. Join Captain Warwick Somerville aboard this historic vessel

for a leisurely 2-hour trip, see a different view of Melbourne and learn some of its history from the informative on-board commentary. Warwick will take us from the *Blackbird* Cruises jetty in Footscray to the end of the navigable part of the Maribyrnong River at Essendon, and return us to Footscray at 8pm. We will leave the jetty at 2 Saltriver Place, Footscray, (Melway 42 E5) at 6pm sharp, so please arrive early so we can all board and leave on time. There is free parking nearby.

Blackbird takes a maximum of 30 passengers, so booking will be restricted to WBA members and immediate family in the first instance. Any seats remaining vacant closer to the date may be made available more widely. The cost of tickets is \$15 per head, which is being subsidised by the Club for its members. Payment must be made at the time of booking, go to <https://www.woodenboat.asn.au/15-march-maribyrnong-river-cruise/> to book and pay with PayPal or credit card.

A group booking has been made at the nearby Station Hotel (59 Napier Street, Footscray) for dinner after the cruise. This is optional and at your own cost, but to be included in the booking, please indicate your attendance on the booking form.

Sailing Day – Werribee South – Sunday 26 March, 10am

The Grand Prix is scheduled to be held at Albert Park in late March, and we will not be able to get to the Lake and the Clubhouse, so we will head to Werribee South instead.

This venue has multiple launching ramps suitable for all types of powered and unpowered craft with plenty of free parking, a family-friendly beach and extensive grassed areas with BBQs for picnics. Head out into the Bay and make for Geelong or wander up the Werribee River and throw out a fishing line (IMPORTANT: low tide is at approx. 1.30pm, make sure you have enough depth before you do this!).

Werribee South Boat Ramp is located near the mouth of the Werribee River, entrance off Beach Rd, Werribee South. (Melway 199 F11).

~ Stephen Taylor's photos from our January Sailing Day ~



~ The Alan Chinn Award 2021 - 2023 ~

The Alan Chinn Award for excellence in boatbuilding was established in 2018 in honour of our founding member, long term committee member and highly skilled boatbuilder, Alan Chinn. The aim of the award is to promote the skills of boat building and restoration and to recognize the work of our members in their boat building activities.

The emphasis is on recognizing the efforts of all members who get involved in a boatbuilding project rather than finding a winner for the award. A brief story about each nominated project will appear in Shavings.

The inaugural award was presented to Russ Hurren for his restoration of the motor cruiser "Maude" at the AGM in 2019. The second award was presented to Tim Drinkall for his restoration of the speedboat "Comet" in 2021.

What interesting nominations will the panel have the pleasure to inspect and consider for the 2023 award?

The WBA Committee has decided to accept nominations from members and present the award at the AGM in 2023. Projects completed during 2021 and 2022 and which were not nominated for the award presented at the AGM in 2021, will be eligible for the 2023 award.

The committee would like members to start thinking about nominations for the award. The nomination could be for a new build, a restoration project or a model boat

construction. You can nominate someone you know, with their consent, or nominate yourself. Each nominated project will be reported in Shavings to keep members in touch with the boatbuilding activity that is going on within the club.

In the rules and requirements for the award it states that "the award is given to the person not the boat" which means that the story behind the project, the effort and motivations of the builder and the involvement of others in seeing the project through are important to the assessment of the award nominations.

The Rules and Requirements document and the Nomination Form for the award will be available on the website in the near future.

At this stage the committee would like to hear from members about projects that have been completed in the last year and a half, or are underway and likely to be completed by the end of 2022. The closing date for nominations will be the last day of February 2023.

If you know of a project that could be nominated (including your own) please contact the Secretary, Chris Kelly or the Chair of the Alan Chinn Award selection panel, Graham Signorini.

Chris Kelly
chrisk1@bigpond.net.au

Graham Signorini
gsignorini@optusnet.com.au

1858
2008 *Celebrating 150 Years*

C. BLUNT
Est. 1858
BOATBUILDER

150-156 Nelson Place, Williamstown. Vic
Ph (03)9397 2323 Fax (03)9397 5530
www.bluntboat.com.au

* West System Adhesives
* **YANMAR** - New Engines - Parts -
- Full Workshop
* Specialty Timbers & Importers of
Kauri Marine Plywood
* Huge Range of Copper & Silicone
Bronze Fasteners, Nuts & Washers
* Wooden Blocks
* Bronze Fittings & Machine Shop
* Caulking Equipment
* Norglass Marine Paints and Clears
* Aussie Boat Plans
* Altex Varnishes

Web: www.woodenboatshop.com.au
Email: sales@woodenboatshop.com.au
Ph: (03) 59 844 333
129 Hotham Road Sorrento VIC 3943

WOODEN BOATSHOP
REPAIRS
NEW BOATS
RESTORATIONS

~ A Twisty Tale ~

A long time ago one of the club's members demonstrated an antique rope making machine. It had a crank handle and internal gears which spun three hooks to make a three strand rope.

Our windy and rainy spring provided lots of idle time so I read up on rope making and ended up making a mock up using sheaves from some old blocks, a rubber band and scraps of wood, all powered by a battery drill.

I won't describe the design principles because there are lots of sources on the internet that show variations of the basic concept.

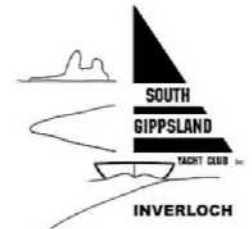


I've used linen threads and nylon netting twine. And it works.

Now I'd like to make braided rope. The machine which plaits the strands for braided rope is called a maypole machine because the bobbins of thread dance around each other to weave the rope. Now, building that will be a challenge, but first I have to find some plans.



9th Year!
Saturday 18th & Sunday 19th
February 2023



More Details Coming Soon @ www.sgycinverloch.com.au/ICDR



Sailing canoe and kayak for sale

One person sailing canoe, 3.6m long by 75cm wide, made from marine ply. It is very light and can be carried easily. It has buoyancy compartments fore and aft.

The canoe includes a mast, sail, floorboards and rudder that pivots upwards for shallow water.

\$250.



One person sea kayak, 5.2m long by 0.6m wide. Fast and stable with fore and aft hatches. Stitch and glue construction with hoop pine for the bottom and sides and gaboon ply for the deck and a lifting rudder with foot controls.

\$250.



If you would like to learn more about the canoe or the kayak or to try either of them out please phone Jim on 0408 279 179, we can bring them to a sailing day at Albert Park Lake.

RELUCTANT SALE – Motor Skiff “SATURDAY MORNING”

“Saturday Morning” is a ply and epoxy displacement speed dinghy fitted with a 6hp outboard motor, and folding canopy, launched September 2018.

The boat is on a Top Gun brand tilting trailer on a custom built cradle that allows easy launching and recovery. The boat is registered (concession) to 12th December 2023 and the trailer is registered to 8th May 2023.

Hull dimensions are length 5.00m (16' 5"), beam 1.90m (6' 3"), weight of boat, motor and fuel tank approx. 285kg, Towing weight of boat on trailer approx. 475kg. The trailer is unbraked.

The motor is a Suzuki 6 hp long shaft four stroke (model DF6AL), purchased new in December 2018. It has low hours and has been serviced at the specified intervals by a Suzuki dealer. The motor has a build in fuel tank plus a connection for a separate fuel tank.

The boat has evenly distributed foam filled buoyancy chambers and adequate storage in the side seats for picnic or camp cruising gear. There is additional storage in the bow. There is separate storage in the rear for the motor's fuel tank and for spare fuel containers. The canopy is stowed folded down for towing and is easily erected either before or after launching. There is standing room under canopy.

There is a main anchor in a dedicated anchor well in the bow, and a smaller stern anchor in a storage recess at the stern. Inclusions are: a pair of 2.1m oars; folding padded removable seat to the forward thwart; tiller extension; fire extinguisher; 4 fenders; fuel tank for connection to the motor; 2 reserve 10 litre fuel containers; 2 anchors with chain and rode; 2 screw in sand holdfasts; canopy; bailing bucket; tow rope.

Location is Westlake Qld 4074.

Contact Ed Elcock on 0400 885 103 or edwardelcock2@bigpond.com.

Asking price is \$4,000.00



For Sale: Thames rowing skiff plus two sets of Canadian Spruce blades

The design is from Duck Flats, based on the Thames Badger. The price includes the plans. It can be adapted to a sliding seat with outriggers.

Includes road trailer.

\$3500 ono

Located in Belgrave 3160.

For more information, phone 0488065779



For Sale: Mirror dinghy

11ft x 5ft, Circa 1965.

Good condition. Comes with all gear.

Great little boat to learn to sail in.

Located Ocean Grove Victoria.

Contact Rod on 0439469779.

Open to reasonable offers.



EXPRESSIONS OF INTEREST SOUGHT



"Toona Foam" is a classic fantail launch, built on Raymond Island by Robert Reynolds in 1925. She is carvel planked in NZ Kauri and powered by a 3 cylinder Yanmar 3GM30 diesel.

Her dimensions are 28' x 10' x 3'. Assessment has deemed her unseaworthy and in need of major maintenance. Owners are seeking expressions of interest for the purchase of "Toona Foam". Offers will be considered.

Region: Victoria

Location: Banksia Peninsula VIC

Usage: Leisure

Reference: Toona

Year: 1925

Length: 28' - 8.53m

Hull Material: Timber

Click on link below for contact and further details

<https://webstermarine.com.au/webstermarine/boats-for-sale/used/power-boats/custom-28-fantail-launch-1925/284730/>



- Craftsman Made Sails
- Sail Repairs & Alterations
- Sail & Boat Covers
- Weather Protect Covers
- All Computer Designed
- Computer Plot/Cut at Seaford



Peter Green Sails

15A Patrick Court, Seaford 3198

• 9773 5094 • 0419 006 398

www.petergreensails.com.au

~ Special Boatyard: Colin Hunt's boats and projects ~

Colin Hunt's boats are now available for sale. For more information please contact Chris on 0438 519 033.

More photos of the boats can be found at woodenboat.asn.au/for-sale-or-wanted.

Arpeggio, a 12' Shearwater

Lapstrake construction, epoxy coated.

Timber is marine plywood, gaff rigged with mainsail and jib.

On a registered trailer. \$2000.00



Wanderer, a Phil Bolger designed 12' cat boat.

Marine ply epoxy construction, gaff rigged with mainsail.

On a registered trailer. Comes with a 3.3 hp Mariner outboard

\$2500.00



WBA Burgees for sale

Our new burgees are now available. Measuring 500mm to the tip, and 400mm along the mast edge, they are available now for \$50.

Contact David Stott on djstott@bigpond.com to place an order.



Blues in Sea. A David Payne designed 17' flat bottomed skiff.

Marine plywood and epoxy construction. Bimini top included.

4hp Mercury outboard

Set of 8' oars

On a registered trailer. \$2500.00



PROJECT: "Vacationer" gaff rigged sloop designed by Peter Stevenson.

This is a project for someone to finish. The boat is currently on a registered trailer and is framed but waiting for planking in marine plywood.

Mast has been constructed along with the gaff booms and bow sprit.

New sails included.

\$2000.00



For Sale: Iain Oughtred 17' Skiff

Iain Oughtred designed 17' double ended Skiff for sailing or rowing. Custom built 2016 in marine ply resulting in a very strong, yet light boat for its size (75kg).

Rows straight and fast with low draft and surprisingly quick under sail. Ready for adventure! Comes complete with excellent galvanised road trailer, balanced lug rig, life jackets, oars, etc. All in excellent condition.

Based Inverloch, Gippsland, Victoria. Contact Simon on 0425 833631 for further information.

Price \$3950.

More photos on the WBA website.



~ WBA Committee 2022 - 2023 ~

| | | | |
|--------------------|------------------|--------------|------------------------------|
| President | Ethan Urch | | president@woodenboat.asn.au |
| Vice President | Graham Signorini | 0425 741 016 | vp@woodenboat.asn.au |
| Secretary | Chris Kelly | 0438 519 033 | secretary@woodenboat.asn.au |
| Treasurer | Sharon Drinkall | 0410 446 720 | treasurer@woodenboat.asn.au |
| Promotions Officer | Andrew Cohen | 0408 033 573 | promotions@woodenboat.asn.au |
| Shavings | Peter Batchelor | 0425 733 532 | shavings@woodenboat.asn.au |
| Website | Penny Braybrook | 9457 5086 | |
| Committee | Bob Morgan | | |
| Committee | Andrew Campbell | 0408 847 319 | |
| Committee | Nick Atkins | | |

~ Please Note ~

Opinions and advice

Opinions and advice expressed in Shavings and the Association's meetings are those of the individual originators only. The Editor and the Association's Committee do not necessarily endorse views expressed at such forums.

Participation in events

Participation in events organised by the Association may involve certain risks inherently associated with the perils of the sea or weather which include the possibility of damage to or loss of vessels and equipment as well as injury or death to persons.

Such risks will require the exercise of the prior judgement of members on behalf of themselves, their guests and invitees, whether to commence or continue any particular activity, irrespective of information supplied by the Association, its Committee or officers.

The Association, its Committee and officers accept no responsibility for damage, loss, injury or death arising from these risks.

Contributions to Shavings

Contributions to Shavings by members of the Association on relevant topics are most welcome. Contributions may be edited before publication at the Editor's discretion. By submitting any material for publication the contributor warrants that he/she is the copyright owner, and consents to the editing of the material and its publication in Shavings and on the Association's website on a royalty-free basis.

IMPORTANT SAFETY NOTICE

It is a Club requirement that all participants at WBA events wear a properly fitted and approved Personal Flotation Device (PFD) at all times when on the water. This applies to members whether in their own boats or in Club boats, and to any passengers travelling with them including visitors and children. It is not enough merely to have the PFDs available, they must be worn. Please ensure that everyone in your boat complies.